



Laying a floor board Insulated / Photo Documentation

With our help, you can learn how to build it yourself. Quality starts with careful preparation. It is better to invest a little more time for quality and safety than cause damage. Any damage, whether material or human, costs you money.

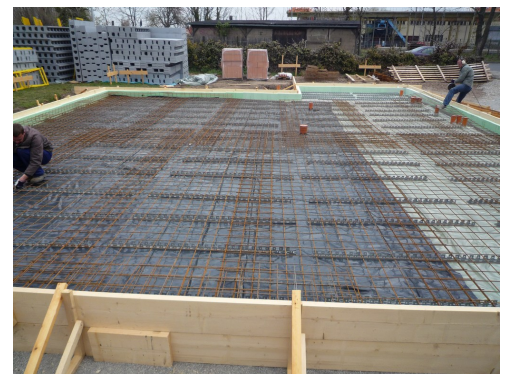
Create edging with wooden planks and support laterally. Lay building foil under or on the flameproof Styro boards.

Install the styrofoam boards according to statics. (There are different compression strength classes) Depending on the structural requirements: Installation of the bottom spacer strips and first mat layer. On the mat layer, the edging besides the stand straps and other spacers.

Cut and lay upper mesh reinforcement with supplements.

Static acceptance by the engineers and concreting.

After concreting, regularly water following the manufacturer's instructions





In our rental range we have a Max Rebar Tire along with coils available for you.

They can save a lot of time. Many of our customers have saved time and money using them.

Visit Max on youtube.

https://www.youtube.com/watch?v=7_Strg-IM_w